



TERRALUME SMALL

LED LUMINAIRE

FEATURES/COMPONENTS

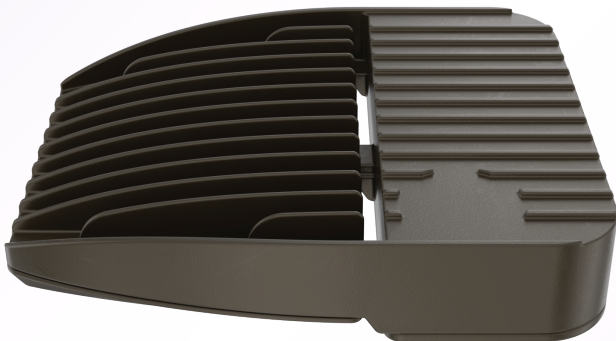


Body of TER-S integrates heatsinks to maximize surface area and dissipate excess heat away from LEDs

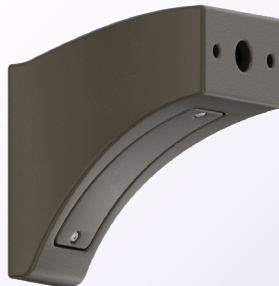
- Driver compartment is isolated for heat protection
- Driver and LED covers are fully gasketed
- Wireways are cast into body
- Can accommodate 2-4 LED modules



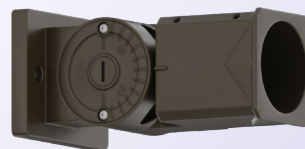
Driver compartment has built-in provision for Photocell/Daylight Harvest



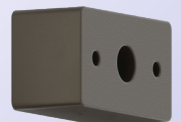
The TER-S can be mounted to a variety of arms to suit almost any installation application



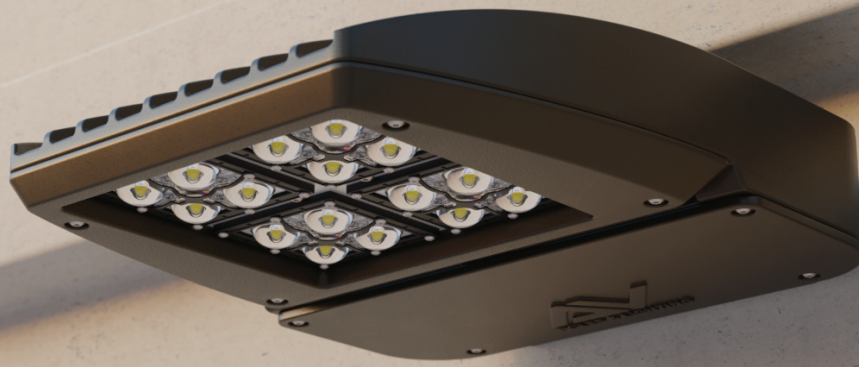
Cast Arm



Knuckle Arm



Wall Mount



LumenUs System

SILICONE MOLDED OPTICS

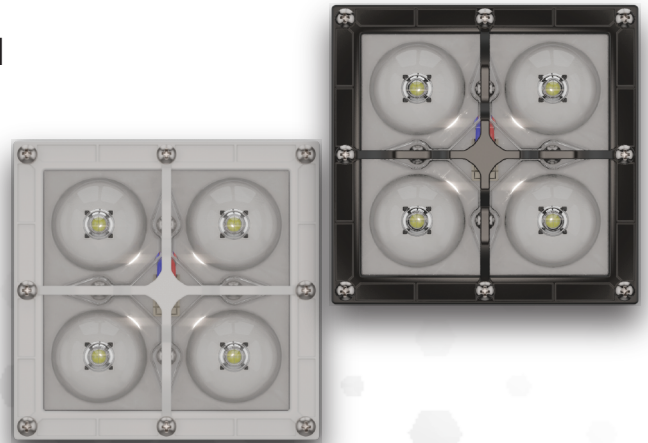
ADVANTAGES

- Does not become brittle or yellow over time
- Provides 96% Optical Clarity
- Heat resistant up to 200°C
- Vandal resistant- soft, flexible material
- Optics are field-rotatable

LUXEON M/MX DIODES

- CRI > 70
- CCT: 4000K & 5000K
- Conformal coating around all LEDs and SMT connector.
- Surface pad finish is Gold plated on all boards.

Black or White frames to suit a wider variety of tastes and color schemes.
House Side Shield (HHS) frames also available.



OPTICAL PROPERTIES

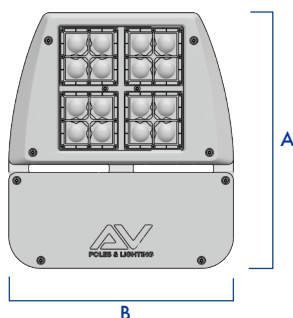
- No yellowing due to thermal aging @ +6,000hrs 130°C
- Reflection properties unchanged @ +10,000hrs 130°C
- Transmission properties unchanged @ +4,500hrs 85°C
- Rated for long term use @ 150°C
- Better chemical resistance than PMMA



TER-S - TERRALUME SMALL LED LUMINAIRE



DIMENSIONS



FIXTURE	A	B	C
TER-S	16"	14"	3"

DESCRIPTION

The TER-S Terralume series by AV Poles & Lighting minimizes surface area with its low profile, modern design. The cast aluminum housing integrates venting for heat dissipation. Ideal for parking lots, campuses, auto dealerships, and design build applications.

FEATURES

- Cast aluminum construction
- Stainless steel hardware
- Dark sky/full cutoff
- 0-10V dimmable driver
- 10-20KV surge protection
- IP67 rated modules - 5 year warranty
- Up to 130+ Lumens Per Watt output
- Low maintenance cost with lifetime >54,000 hrs
- Field-rotatable modules have multiple lighting distribution options with optical lens transmittance up to 96%
- Vandal resistant silicone molded optic won't turn brittle or yellow over time, and is heat resistant up to 200°C.
- TGIC thermoset polyester powder coat finish is electrostatically applied at a 3.0 mil nominal thickness. A five stage metal pre-treatment process and sealer provide maximum corrosion resistance. The powder top coat is baked in excess of 400 degrees for supreme endurance.



ORDERING INFORMATION

AVPL -

LUMINAIRE	OPTICS	WATTAGE	COLOR TEMP	VOLTAGE	MOUNTING	FINISH	OPTIONS
TER-S	TYPE II	35W 700mA 55W 1050mA	3000K WARM WHITE	120-277V VOLTAGE SENSING	WALL MOUNT	DARK BRONZE	HOUSE-SIDE SHIELD
	TYPE III	71W 700mA 106W 1050mA	4000K NEUTRAL WHITE	347-480V VOLTAGE SENSING	POLE DRILLING	BLACK	PHOTOCELL BUTTON
	TYPE IV	104W 700mA 156W 1050mA	5000K COOL WHITE			WHITE	FSP211 MOTION SENSOR
	TYPE V	136W 700mA 205W 1050mA				GREY	3PIN RECEPTACLE
					CONTACT FACTORY FOR DRILLING OPTIONS	GREEN ALL RAL COLORS AVAILABLE	7PIN RECEPTACLE

LUMEN OUTPUT CHART

3000K		Type II	Type III	Type IV	Type V	4000K		Type II	Type III	Type IV	Type V	5000K		Type II	Type III	Type IV	Type V
	35W 700mA	4,169	4,295	4,129	4,177		35W 700mA	4,424	4,558	4,381	4,432		35W 700mA	4,496	4,632	4,452	4,504
	55W 1050mA	5,670	5,842	5,615	5,680		55W 1050mA	6,017	6,199	5,958	6,028		55W 1050mA	6,114	6,300	6,055	6,125
	71W 700mA	8,338	8,591	8,257	8,353		71W 700mA	8,848	9,116	8,762	8,864		71W 700mA	8,992	9,264	8,904	9,008
	106W 1050mA	11,340	11,683	11,230	11,360		106W 1050mA	12,033	12,398	11,916	12,055		106W 1050mA	12,229	12,599	12,110	12,251
		Type II	Type III	Type IV	Type V			Type II	Type III	Type IV	Type V			Type II	Type III	Type IV	Type V
	104W 700mA	12,507	12,886	12,386	12,530		104W 700mA	13,272	13,674	13,143	13,296		104W 700mA	13,487	13,896	13,356	13,512
	156W 1050mA	17,010	17,525	16,844	17,040		156W 1050mA	18,050	18,597	17,874	18,083		156W 1050mA	18,343	18,899	18,165	18,376
	136W 700mA	16,676	17,181	16,514	16,706		136W 700mA	17,696	18,232	17,524	17,728		136W 700mA	17,983	18,528	17,808	18,016
	205W 1050mA	22,680	23,367	22,459	22,721		205W 1050mA	24,067	24,796	23,833	24,110		205W 1050mA	24,457	25,198	24,220	24,501

MADE IN THE USA

AV Poles & Lighting, steel and aluminum poles and brackets are manufactured in Lancaster, California, U.S.A., and meet the criteria for the Buy American Requirement under Section 1605 of the American Recovery and Reinvestment Act of 2009.

VERTICAL INTEGRATION

Design, engineering, tooling, and fabrication all in-house

QUICK SHIP MATERIAL

4in and 5in square steel material in stock for 5 day shipment

ANCHOR BOLTS AND TEMPLATES

In stock for same day shipment

STRUCTURAL CALCULATIONS

For pole assemblies and foundations with engineer's stamp

PROFESSIONAL CAD DRAWINGS

Specifications and approvals

EXTENDED WARRANTIES

1 year standard warranty with 5 & 10 year optional warranties

**AV POLES AND LIGHTING INC.
TERMS AND CONDITIONS OF SALE**

Terms of Payment

Net 30 days from date of shipment (subject to credit approval). A service charge of 2% per month will be made on past due invoices.

Prices

Published prices are subject to change without notice. All orders will be acknowledged by and are subject to acceptance by the company. Hold orders are subject to increase at the time of release unless otherwise agreed upon. Minimum billing is 50.00 net. All invoices are subject to federal, state, and local taxes. These taxes will be included on the invoice if applicable.

Freight

All shipments are freight on board (FOB) and will be shipped via land transportation at the company discretion. Title passes to consignee on delivery to the carrier. All Claims for loss or damage in transit must be made to the carrier by the consignee. Material will be prepaid and billed to our customer unless otherwise stated. Freight allowed is \$3000.00. Will Call services available. All pre-shipment of anchor bolts are plus freight.

Restocking Charge

AV Poles and Lighting Inc. reserves the right to assess a minimum restocking charge of 50% of the order value if the order is canceled after it has been processed and has received an Estimated Ship Date.

Returned Goods

Acceptance to return goods must be authorized in writing by AV Poles and Lighting Inc. When material is accepted for return, the purchaser must pay return freight and a minimum re-stocking fee of 25% in addition to any rework to return the goods to saleable condition. All requests for return must be made within 30 days of shipment. The responsibility of the company for defective material is limited solely to the replacement or repair of the material and does not include any incidental or consequential damages which may occur. This would include any labor, repair costs, or transportation charges incurred without prior written authorization from the company.

Cancellation / Change Orders

Cancellation fee of a minimum of 50% applies to all acknowledged and released orders
Change orders will be accepted at n/c 15 days after the acknowledged released order. After 15days 50% change order fee applies.
General: Company reserves the right to change specifications without notice.

Limited Warranty

All company products are carefully tested and inspected before shipment and are warranted to be free of defects in material and workmanship for one (1) year from the date of shipment. Any defective products will be repaired or replaced at the option of the company, provided a written claim is made within the warranty period. Any action by the purchaser under or relating to this agreement or the products sold must be commenced within (1) year after such cause of action has accrued.

Standard Finishes are warranted not to peel, crack, blister or craze from normal atmospheric exposure for one (1) year from shipment date.

Company products have been designed in accordance with 2010 Florida Building Code (FBC). When selecting poles, total effective projected area (EPA) of the luminaries and adaptors must be considered. The total EPA should not exceed the maximum loading value recommended on each pole.

All poles must be installed per the companies' recommendations provided on each pole's cut sheet. Failure to do so will negate the 1 year pole warranty. Any product failure due to poor installation will not be covered by the company.

No warranty expressed or implied exist other than that included above. No person, agent, or distributor is authorized to give any warranty on behalf of the company.



43827 Division St. Lancaster, CA 93535

Toll Free: (844) 770-AVPL Fax: (661) 945-2764

sales@avpltg.com • www.avpolesandlighting.com