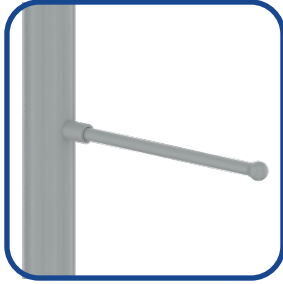


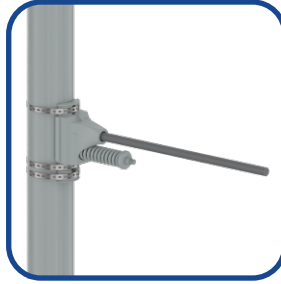
Job Name: _____ Location: _____ Quote: _____
 Client Name: _____ Type: _____ Quote Date: _____



FBA



COBA



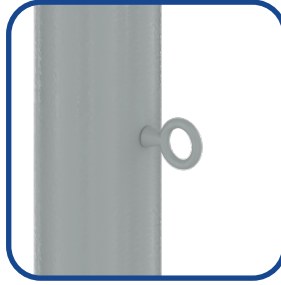
SLBA



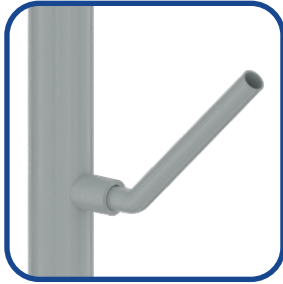
FBH



COBH



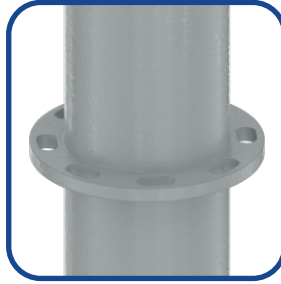
BEB



FFH



COFH



CAT-RING

TUBE
(FBA, COBA, FFH, COFH)

1.3125" O.D.
 6061 T6 Aluminum

TUBE
(FBH, COBH)

1" O.D.
 6061 T6 Aluminum

TUBE
(SLBA)

0.75" O.D.
 Carbon Fiber

CLAMPS

A356 Cast Aluminum

HARDWARE

Stainless Steel

FINISH

TGIC thermoset polyester powder coat finish is electrostatically applied at a 3.0 mil nominal thickness. A five stage metal pre-treatment process and sealer provide maximum corrosion resistance. The powder top coat is baked in excess of 400 degrees for supreme endurance.



ALUMINUM/STEEL ACCESSORIES SCHEDULE

DESCRIPTION/CATEGORY	CATALOG SERIES	STD. LENGTH	OPTIONS	FINISH
BANNER ARMS	FBA-18	18"	EXTRA HAND HOLE	DARK BRONZE
	FBA-24	24"		
	FBA-30	30"	COUPLING/HUB	BLACK
	COBA-18	18"	GFI/RECEPTACLE	WHITE
	COBA-24	24"		
	COBA-30	30"	FESTOON (OUTLET BY OTHERS)	GREY
	SLBA-18	18"		
	SLBA-24	24"		GREEN
	SLBA-30	30"		
BASKET HOLDERS	FBH	12"		
	COBH	12"		
FLAG HOLDERS	FFH	N/A		
	COFH	N/A		
BANNER EYE BOLTS	BEB	N/A		
CATENARY RINGS	CAT-RING	N/A		