



POLES & LIGHTING

BHA

BULLHORN ALUMINUM ARM

AV POLES & LIGHTING
 43827 Division St.
 Lancaster, CA 93535
 Toll Free: (844) 770-AVPL
 Fax: (661) 945-2764
 sales@avpltg.com
 www.avpltg.com

Job Name: _____

Location: _____

Quote: _____

Client Name: _____

Type: _____

Quote Date: _____

DESCRIPTION

The Bullhorn Aluminum Arm is ideal for courtyards, pathways, municipal, and commercial decorative light pole applications. For use with most post top fixtures. Mountable on steel or aluminum poles, existing or new.

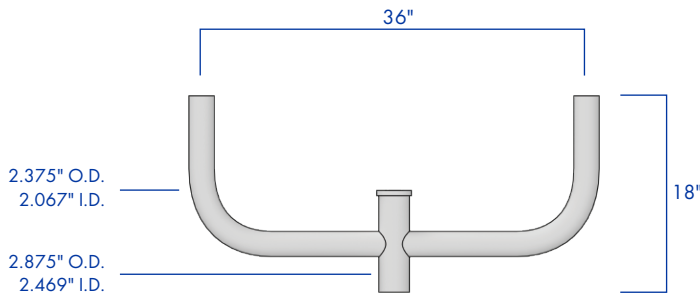
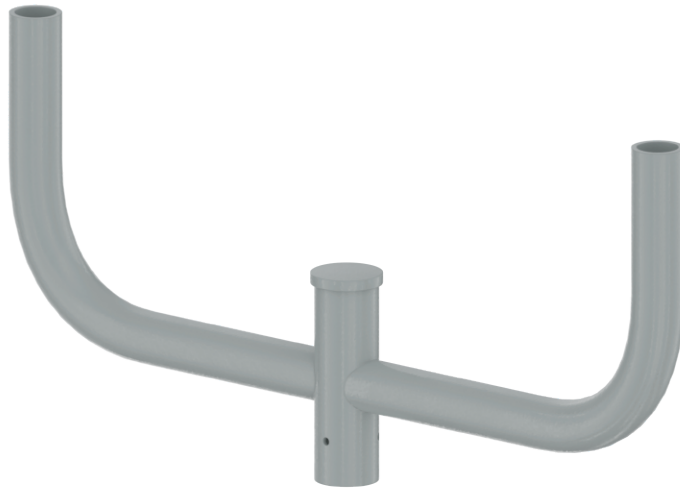
FEATURES

Bullhorn arms fabricated from 2.375" O.D. 6063 T6 aluminum alloy schedule 40 (T20) pipe.

Center tube fabricated from 2.875" O.D. 6063 T6 aluminum alloy schedule 40 (T20) pipe. Slips over PT23 tenon.

Stainless steel hardware.

TGIC thermoset polyester powder coat finish is electrostatically applied at a 3.0 mil nominal thickness. A five stage metal pre-treatment process and sealer provide maximum corrosion resistance. The powder top coat is baked in excess of 400 degrees for supreme endurance.



ORDERING INFORMATION

AVPL -

ARM	MOUNTING	FINISH
BHA	2-90.....	DARK BRONZE
	2-180.....	BLACK
	3-90.....	WHITE
	3-120.....	GREY
	3-180.....	GREEN
	4-90.....	
	4-180.....	
	5-90.....	

CONTACT FACTORY FOR
EXTRA MOUNTING OPTIONS

ALL RAL COLORS
AVAILABLE