

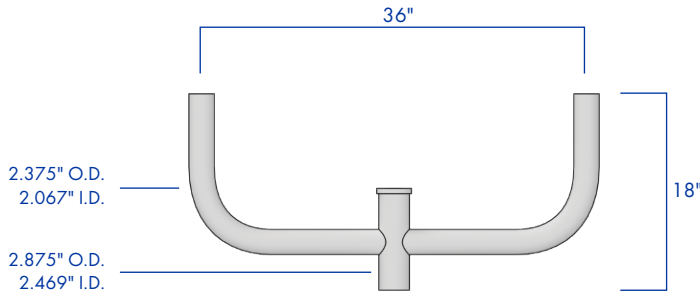
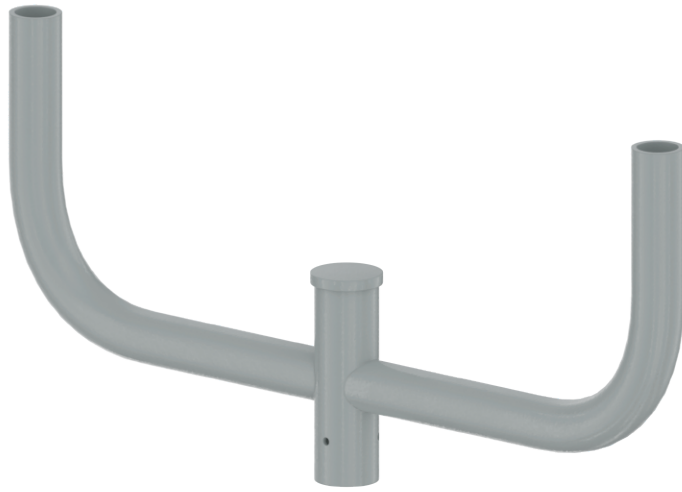


POLES & LIGHTING

BHS BULLHORN STEEL ARM

AV POLES & LIGHTING
43827 Division St.
Lancaster, CA 93535
Toll Free: (844) 770-AVPL
Fax: (661) 945-2764
sales@avpltg.com
www.avpltg.com

Job Name: _____ Location: _____ Quote: _____
Client Name: _____ Type: _____ Quote Date: _____



DESCRIPTION

The Bullhorn Steel Arm is ideal for courtyards, pathways, municipal, and commercial decorative light pole applications. For use with most post top fixtures. Mountable on steel or aluminum poles, existing or new.

FEATURES

Bullhorn arms fabricated from 2.375" O.D. A500 grade B structural steel schedule 40 pipe.

Center tube fabricated from 2.875" O.D. A500 grade B structural steel schedule 40 pipe. Slips over PT23 tenon.

Stainless steel hardware.

TGIC thermoset polyester powder coat finish is electrostatically applied at a 3.0 mil nominal thickness. A five stage metal pre-treatment process and sealer provide maximum corrosion resistance. The powder top coat is baked in excess of 400 degrees for supreme endurance.



ORDERING INFORMATION

AVPL -

ARM	MOUNTING	FINISH
BHS	2-90.....	DARK BRONZE
	2-180.....	BLACK
	3-90.....	WHITE
	3-120.....	GREY
	3-180.....	GREEN
	4-90.....	
	4-180.....	
	5-90.....	

CONTACT FACTORY FOR
EXTRA MOUNTING OPTIONS

ALL RAL COLORS
AVAILABLE