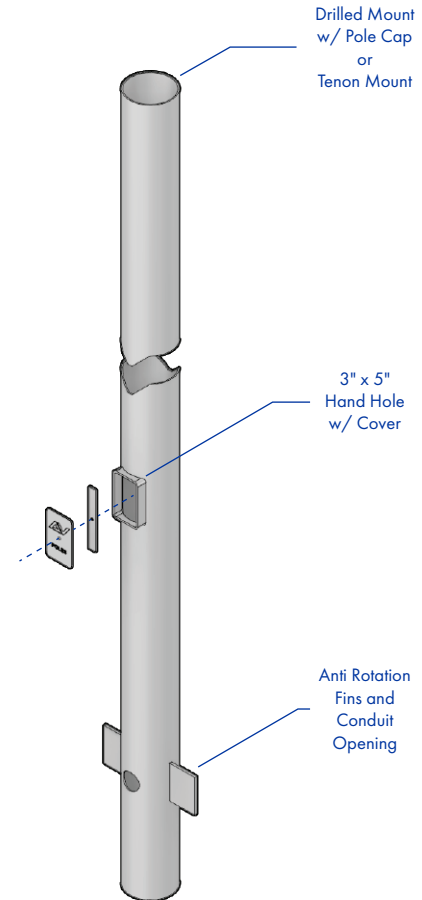
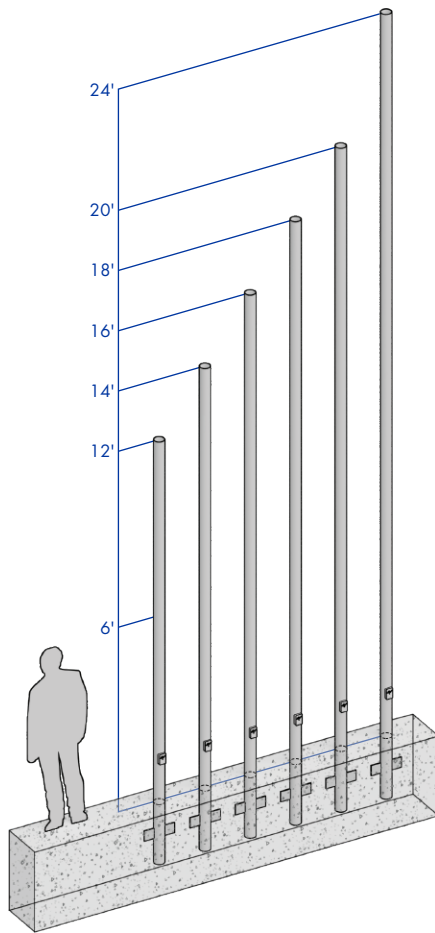


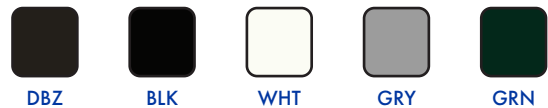
4" ROUND STRAIGHT STEEL DIRECT BURIAL (0.120 Standard Wall)



SHAFT: Commercial-quality, hot-rolled, carbon steel tubing with a minimum yield strength of 46,000 PSI, conforms to ASTM A500 grade B.

GROUNDING: Provision; 3/8-16 Threaded stud welded to inner shaft wall opposite hand hole. Flat washer and hex nut provided.

HARDWARE: S304 stainless steel



FINISH: TGIC thermoset polyester powder coat finish is electrostatically applied at a 3.0 mil minimum thickness. A five stage metal pretreatment process and sealer provide maximum corrosion resistance. The powder top coat is baked in excess of 400 degrees for supreme endurance.

POLE SCHEDULE

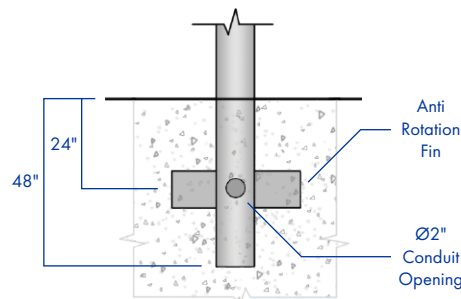
E.P.A. DATA SCHEDULE

Calculations based on sustained wind forces plus additional 1.3 mph gust.

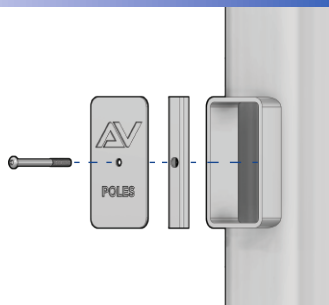
| CATALOG NUMBER | POLE HEIGHT | SHAFT SIZE | WALL GAUGE | DIRECT BURIAL | MAX. FIXT. WT. | 70 MPH | 80 MPH | 90 MPH | 100 MPH |
|----------------|-------------|------------|------------|-------------------------|----------------|--------|--------|--------|---------|
| RSS-DB-124-11 | 12' | Ø4" | 11 | Extends 48" below grade | N/A | N/A | N/A | N/A | N/A |
| RSS-DB-144-11 | 14' | Ø4" | 11 | Extends 48" below grade | N/A | N/A | N/A | N/A | N/A |
| RSS-DB-164-11 | 16' | Ø4" | 11 | Extends 48" below grade | N/A | N/A | N/A | N/A | N/A |
| RSS-DB-184-11 | 18' | Ø4" | 11 | Extends 48" below grade | N/A | N/A | N/A | N/A | N/A |
| RSS-DB-204-11 | 20' | Ø4" | 11 | Extends 48" below grade | N/A | N/A | N/A | N/A | N/A |
| RSS-DB-244-11 | 24' | Ø4" | 11 | Extends 48" below grade | N/A | N/A | N/A | N/A | N/A |

DIRECT BURIAL

DIRECT BURIAL: Direct burial poles are placed directly in ground material, eliminating the need for anchor plates and anchor bolt requirements. Fabricated with two anti-rotation fins and Ø2" conduit opening for electrical access.



HAND HOLE

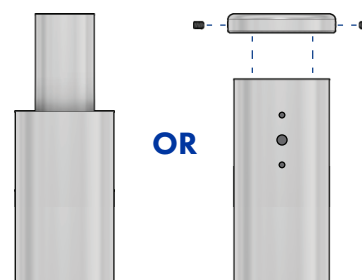


HAND HOLE: Reinforced 3" x 5" hand hole is located 18" above grade. Cover and attachment hardware provided.

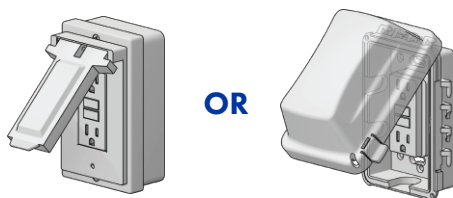
TENON OR DRILL MOUNT

TENON MOUNT: Available with 2.375" O.D. or 2.875" O.D. tenon

DRILL MOUNT: Removable top cap provided with drill-mount poles



GFI RECEPTACLE



GFI-METAL COVER: 2 gang vertical GFI receptacle with NEC 2017 Section 406.9(B)(1) compliant metal cover.

GFI-WEATHER PROOF IN-USE COVER: 2 gang vertical GFI receptacle with In Use Non Metallic cULus listed cover.

ORDERING INFORMATION

AVPL-RSS-DB -

| HEIGHT | SHAFT | SHAFT WALL | MOUNTING | GFI | ACCESSORIES | FINISH |
|--|-----------------|--------------------|--|---|-----------------------------------|-----------------------------|
| 12' | 4" Ø4" Round | 0.120" 11 Gauge | PT23 Ø2.375" TENON | GFI with METAL COVER | BEB BANNER EYE BOLT | DBZ DARK BRONZE |
| 14' | | | PT27 Ø2.875" TENON | GFI with WEATHER PROOF IN-USE COVER | CPLN THREADED COUPLING | BLK BLACK |
| 16' | | | 1@90 POLE DRILLING | | BA BANNER ARMS | WHT WHITE |
| 18' | | | 2@90 POLE DRILLING | | BH BASKET HOLDERS | GRY GREY |
| 20' | | | 2@180 POLE DRILLING | | FH FLAG HOLDERS | GRN GREEN |
| 24' | | | 3@90 POLE DRILLING | | | GALV GALVANIZED |
| | | | 3@120 POLE DRILLING | | | |
| | | | 4@90 POLE DRILLING | | | |
| CONTACT FACTORY FOR HEIGHT OPTIONS | | | CONTACT FACTORY FOR DRILLING OPTIONS | | CONTACT FACTORY FOR DETAILS | ALL RAL COLORS AVAILABLE |