

## BASE COVER ROUND FLAT CAST ALUMINUM (2 PIECE)

### DESCRIPTION

The BCRF-CA split base is ideal for courtyards, pathways, municipal, and commercial decorative light pole applications.

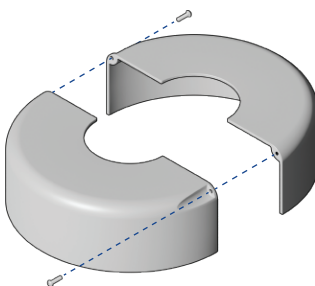
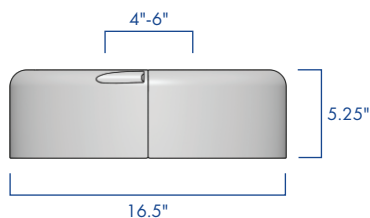
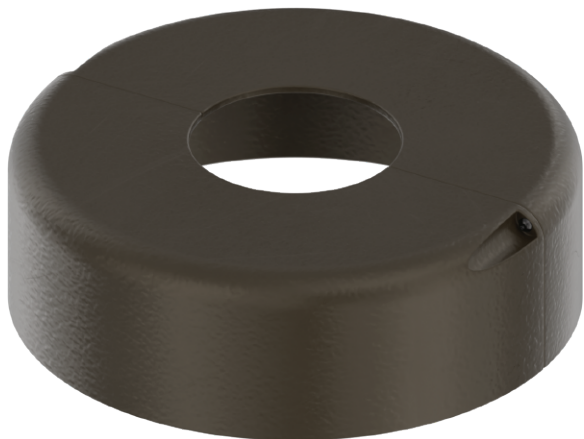
### FEATURES

Clamps around 4", 5", and 6" O.D. smooth or fluted round aluminum shafts, or 4" and 5" O.D. smooth or fluted round steel shafts.

Two piece corrosion resistant cast aluminum construction with 0.25" minimum wall thickness.

Stainless steel hardware.

TGIC thermoset polyester powder coat finish is electrostatically applied at a 3.0 mil nominal thickness. A five stage metal pre-treatment process and sealer provide maximum corrosion resistance. The powder top coat is baked in excess of 400 degrees for supreme endurance.



SUITABLE FOR  
**WET**  
LOCATIONS

## ORDERING INFORMATION

AVPL -

BASE	SHAFT OPENING	FINISH
BCRF	<p>Ø4" ROUND SHAFT</p> <p>Ø5" ROUND SHAFT</p> <p>*Ø6" ROUND SHAFT</p>	<p>DARK BRONZE</p> <p>BLACK</p> <p>WHITE</p> <p>GREY</p> <p>GREEN</p>

\*ALUMINUM ONLY

ALL RAL COLORS  
AVAILABLE