

ALUMINUM HINGED BASE (2 PIECE)

DESCRIPTION

The AHB split base is suited for any situation where ground level access to pole top is desired. Ideal for courtyards, pathways, municipal, and commercial decorative light pole applications.

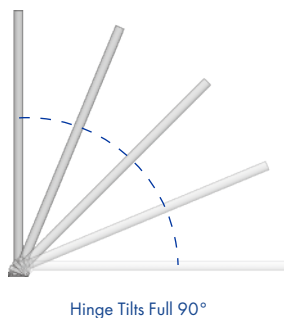
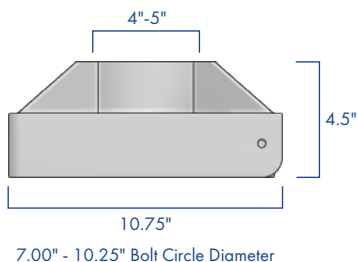
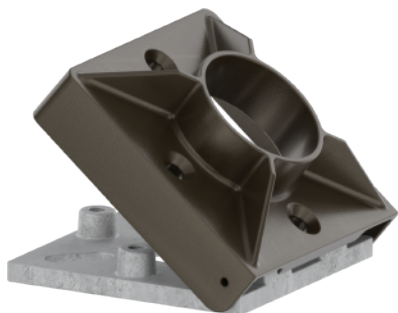
FEATURES

Welds to 4" or 5" O.D. smooth or fluted, round or square aluminum shafts.

Two piece corrosion resistant cast aluminum construction

Stainless steel hardware.

TGIC thermoset polyester powder coat finish is electrostatically applied at a 3.0 mil nominal thickness. A five stage metal pre-treatment process and sealer provide maximum corrosion resistance. The powder top coat is baked in excess of 400 degrees for supreme endurance.



SUITABLE FOR
WET
LOCATIONS

ORDERING INFORMATION

AVPL -

BASE	SHAFT OPENING	FINISH
AHB	<p>Ø4" ROUND SHAFT</p> <p>Ø5" ROUND SHAFT</p> <p>4" SQUARE SHAFT</p> <p>5" SQUARE SHAFT</p>	<p>DARK BRONZE</p> <p>BLACK</p> <p>WHITE</p> <p>GREY</p> <p>GREEN</p>

ALL RAL COLORS
AVAILABLE