

MONTANA LARGE SPLIT BASE (2 PIECE)

DESCRIPTION

The MON-L split base is ideal for courtyards, pathways, municipal, and commercial decorative light pole applications.

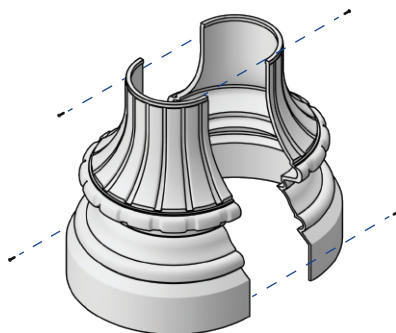
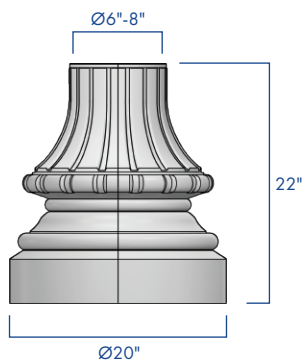
FEATURES

Clamps around 6", 7", and 8" O.D. smooth or fluted round steel or aluminum shafts.

Two piece corrosion resistant cast aluminum construction with minimum wall thickness of .250"

Stainless steel hardware.

TGIC thermoset polyester powder coat finish is electrostatically applied at a 3.0 mil nominal thickness. A five stage metal pre-treatment process and sealer provide maximum corrosion resistance. The powder top coat is baked in excess of 400 degrees for supreme endurance.



SUITABLE FOR
WET
LOCATIONS

ORDERING INFORMATION

AVPL -

BASE	SHAFT OPENING	FINISH
MON-L-SB	Ø6" ROUND SHAFT	DARK BRONZE
	Ø7" ROUND SHAFT	BLACK
	Ø8" ROUND SHAFT	WHITE
		GREY
		GREEN

ALL RAL COLORS
AVAILABLE