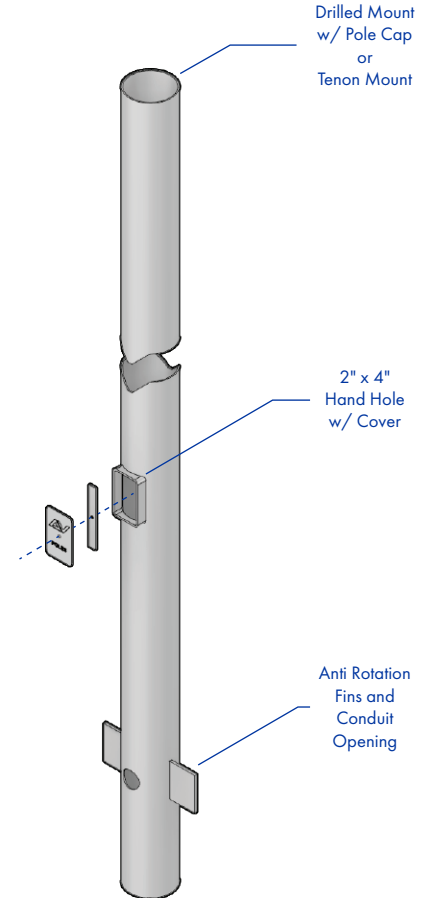
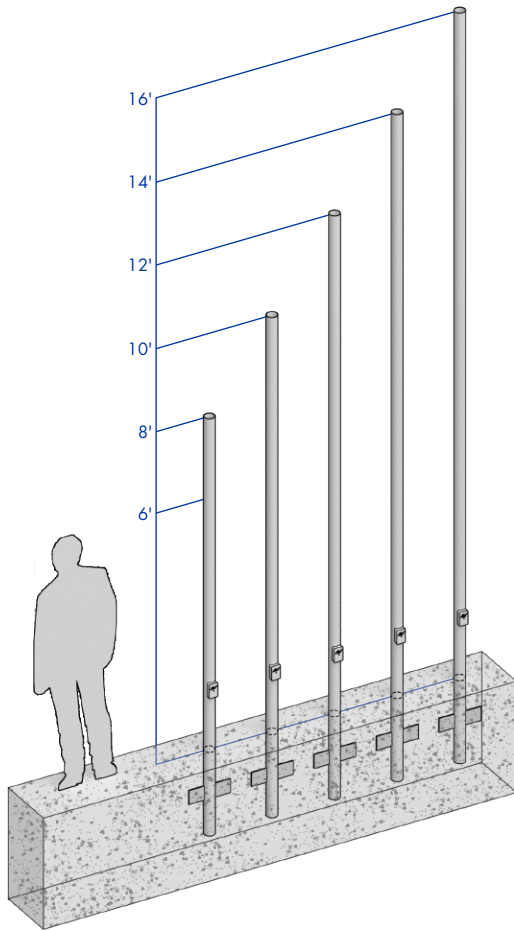


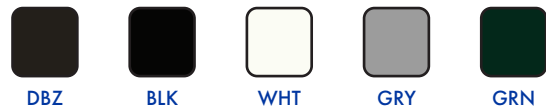
## 3" ROUND STRAIGHT STEEL DIRECT BURIAL (0.120 Standard Wall)



**SHAFT:** Commercial-quality, hot-rolled, carbon steel tubing with a minimum yield strength of 46,000 PSI, conforms to ASTM A500 grade B.

**GROUNDING:** Provision; 3/8-16 Threaded stud welded to inner shaft wall opposite hand hole. Flat washer and hex nut provided.

**HARDWARE:** S304 stainless steel



**FINISH:** TGIC thermoset polyester powder coat finish is electrostatically applied at a 3.0 mil minimum thickness. A five stage metal pretreatment process and sealer provide maximum corrosion resistance. The powder top coat is baked in excess of 400 degrees for supreme endurance.

### POLE SCHEDULE

CATALOG NUMBER	POLE HEIGHT	SHAFT SIZE	WALL GAUGE	DIRECT BURIAL
RSS-DB-083-11	8'	Ø3"	11	Extends 48" below grade
RSS-DB-103-11	10'	Ø3"	11	Extends 48" below grade
RSS-DB-123-11	12'	Ø3"	11	Extends 48" below grade
RSS-DB-143-11	14'	Ø3"	11	Extends 48" below grade
RSS-DB-163-11	16'	Ø3"	11	Extends 48" below grade

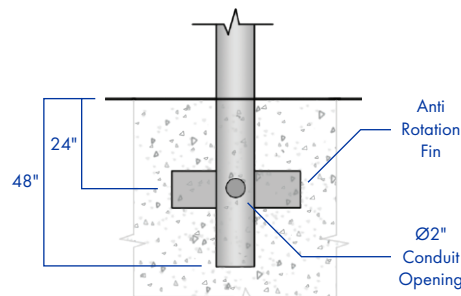
### E.P.A. DATA SCHEDULE

Calculations based on sustained wind forces plus additional 1.3 mph gust.

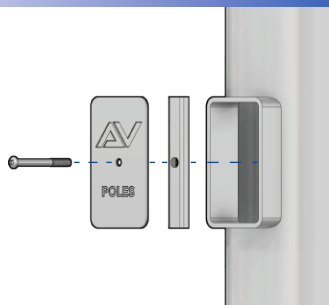
MAX. FIXT. WT.	70 MPH	80 MPH	90 MPH	100 MPH
N/A	N/A	N/A	N/A	N/A
N/A	N/A	N/A	N/A	N/A
N/A	N/A	N/A	N/A	N/A
N/A	N/A	N/A	N/A	N/A
N/A	N/A	N/A	N/A	N/A

## DIRECT BURIAL

**DIRECT BURIAL:** Direct burial poles are placed directly in ground material, eliminating the need for anchor plates and anchor bolt requirements. Fabricated with two anti-rotation fins and Ø2" conduit opening for electrical access.



## HAND HOLE

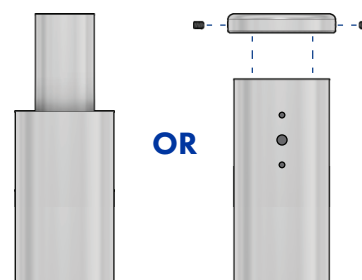


**HAND HOLE:** Reinforced 2" x 4" hand hole is located 18" above grade. Cover and attachment hardware provided.

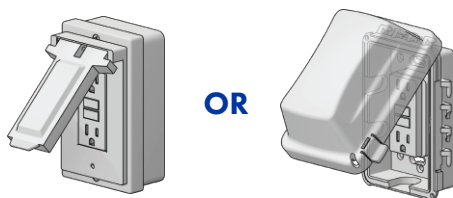
## TENON OR DRILL MOUNT

**TENON MOUNT:** Available with 2.375" O.D. or 2.875" O.D. tenon

**DRILL MOUNT:** Removable top cap provided with drill-mount poles



## GFI RECEPTACLE



**GFI-METAL COVER:** 2 gang vertical GFI receptacle with NEC 2017 Section 406.9(B)(1) compliant metal cover.

**GFI-WEATHER PROOF IN-USE COVER:** 2 gang vertical GFI receptacle with In Use Non Metallic cULus listed cover.

## ORDERING INFORMATION

AVPL-RTA -	HEIGHT	SHAFT	SHAFT WALL	MOUNTING	GFI	ACCESSORIES	FINISH
	8'	3" Ø3" Round	0.120" 11 Gauge	PT23 Ø2.375" TENON	GFI with METAL COVER	BEB BANNER EYE BOLT	DBZ DARK BRONZE
	10'			PT27 Ø2.875" TENON	GFI with WEATHER PROOF IN-USE COVER	CPLN THREADED COUPLING	BLK BLACK
	12'			1@90 POLE DRILLING		BA BANNER ARMS	WHT WHITE
	14'			2@90 POLE DRILLING		BH BASKET HOLDERS	GRY GREY
	16'			2@180 POLE DRILLING		FH FLAG HOLDERS	GRN GREEN
				3@90 POLE DRILLING			GALV GALVANIZED
				3@120 POLE DRILLING			
				4@90 POLE DRILLING			
CONTACT FACTORY FOR HEIGHT OPTIONS				CONTACT FACTORY FOR DRILLING OPTIONS		CONTACT FACTORY FOR DETAILS	ALL RAL COLORS AVAILABLE