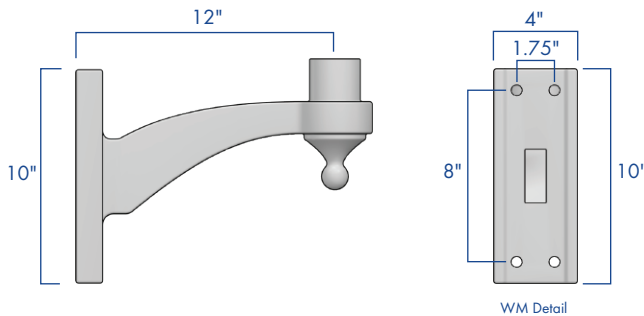
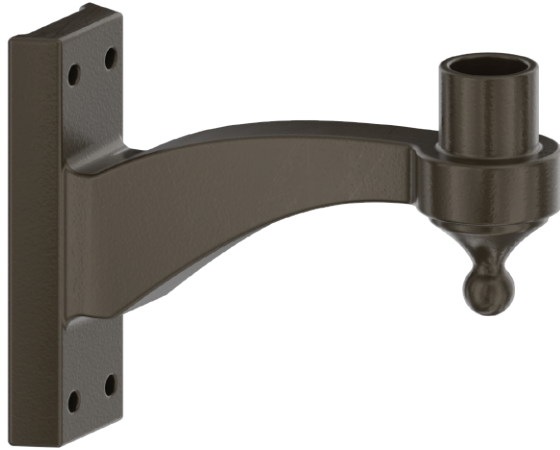


SWEEP ARM SMALL BRACKET



DESCRIPTION

This versatile bracket is suited for traditional and contemporary fixtures. The SWA-S is ideal for municipal, and commercial decorative light applications. For use with most post top fixtures.

FEATURES

Bracket fabricated from A356 cast aluminum.

Fixtures mount to 2 $\frac{3}{8}$ " O.D. tenon.

Stainless steel hardware.

TGIC thermoset polyester powder coat finish is electrostatically applied at a 3.0 mil nominal thickness. A five stage metal pre-treatment process and sealer provide maximum corrosion resistance. The powder top coat is baked in excess of 400 degrees for supreme endurance.



SUITABLE FOR
WET
LOCATIONS

ORDERING INFORMATION

AVPL - _____ - _____ - _____

ARM	MOUNTING	FINISH
SWA-S	1-90..... ○	DARK BRONZE
	2-90..... ○○	BLACK
	2-180..... ○○	WHITE
	3-90..... ○○○	GREY
	4-90..... ○○○○	GREEN
	WALL MOUNT..... ○	

CONTACT
FACTORY FOR
DRILLING OPTIONS

ALL RAL COLORS
AVAILABLE