

BASE COVER SQUARE FLAT (2 PIECE)

DESCRIPTION

The BCSF split base is ideal for courtyards, pathways, municipal, and commercial decorative light pole applications.

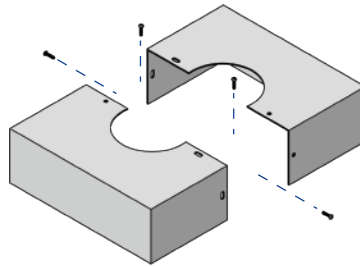
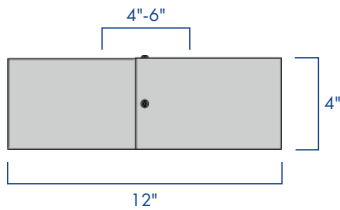
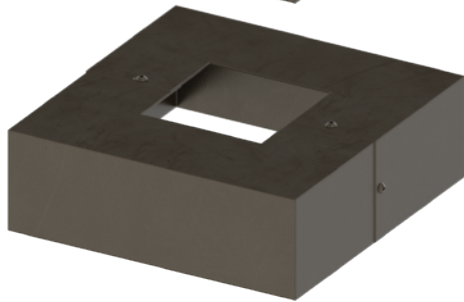
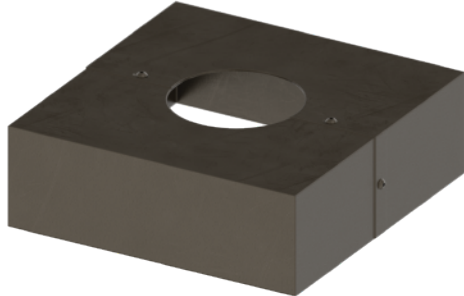
FEATURES

Clamps around 4", 5", and 6" O.D. smooth or fluted, round or square, steel or aluminum shafts.

Two piece corrosion resistant aluminum construction

Stainless steel hardware.

TGIC thermoset polyester powder coat finish is electrostatically applied at a 3.0 mil nominal thickness. A five stage metal pre-treatment process and sealer provide maximum corrosion resistance. The powder top coat is baked in excess of 400 degrees for supreme endurance.



SUITABLE FOR
WET
LOCATIONS

ORDERING INFORMATION

AVPL -

BASE	SHAFT OPENING	FINISH
BCSF	Ø4" ROUND SHAFT	DARK BRONZE
	Ø5" ROUND SHAFT	BLACK
	Ø6" ROUND SHAFT	WHITE
	4" SQUARE SHAFT	GREY
	5" SQUARE SHAFT	GREEN
	6" SQUARE SHAFT	

ALL RAL COLORS
AVAILABLE