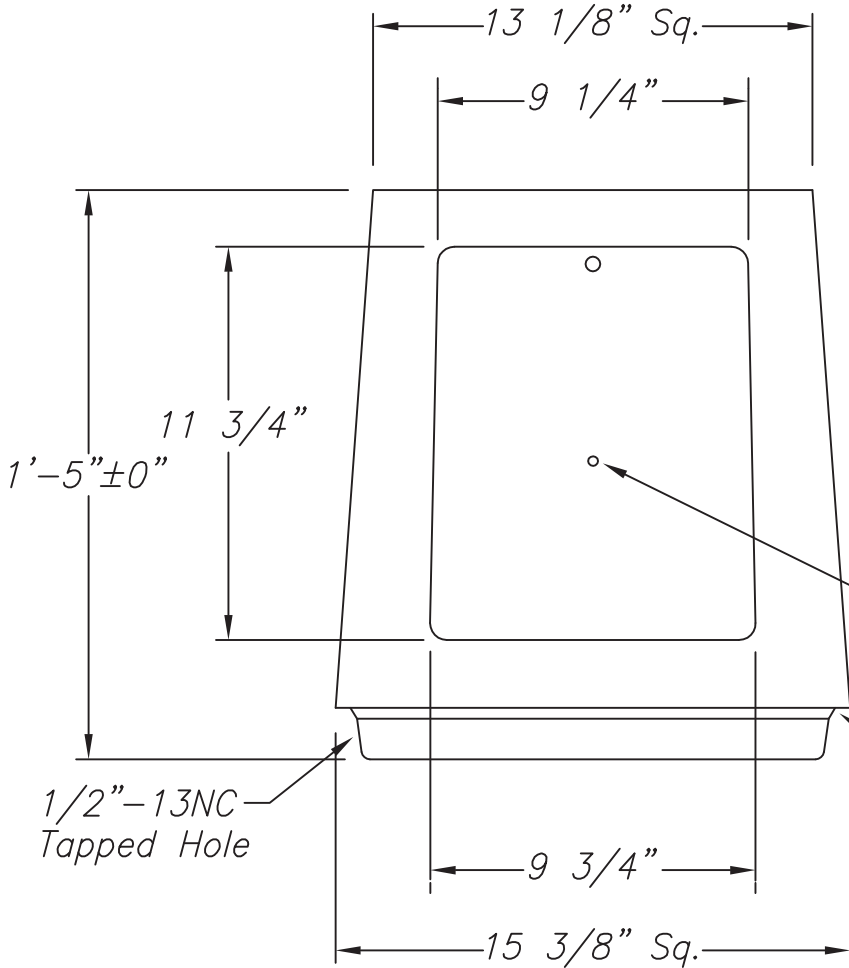


BASE SUPPLIED WITH:
 (1) Door And 1/4"-20NC Stainless Steel Hex. Hd. Screw
 (2) Eight 1" Washers 1/2" Thick x 2 3/4" O.D. (Washers Galvanized Per ASTM F2329)
 10 1/2" To 13 1/2" Dia. Bolt Circle



Welding conforms to American Welding Society Structural Welding Code (Aluminum) ANSI/AWS D1.2 (current edition)

AKRON FOUNDRY TB1-AF 1315-17 I.W.
 (TB1-17")

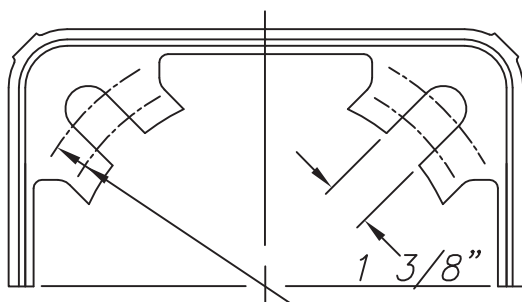
MATERIAL: Alum. Alloy 356-T6
 ASTM B108

Note: Base Meets 2013 AASHTO Breakaway Requirements

1/4"-20NC Tapped Hole (Back Wall)

4043 Weld Wire (Heat Treat After Welding)

1/2"-13NC Tapped Hole



13" To 15" Dia. Bolt Circle

Maximum Values:
 Moment: 23,692 ft. lbf.
 Pole Size: 10" x .250"

NO.	REVISIONS	DATE
1	Added Welding Note	11/04
2	Note Was "1994 AASHTO" (KDP)	4/08
3	Note Was "2001 AASHTO" (RCM)	11/13
4	Added ASTM B108 (RCM)	11/13
5	Was ASTM A153 For Washers (ASR)	2/14



TITLE		TRANSFORMER BASE	
CUSTOMER			
SCALE	6	DATE	09/15/93
BY	LW	DWG. NO.	A70501
CHK'D			